



D. ARGYROPOULOS & associates
environmental consultants





OUR VISION

Our vision is to support Global Sustainable Development.

A development that will enhance creation of jobs promoting human well-being while at the same time not threatening the natural environment and even enhance environmental conservation.

To this vision, our contribution will focus on projects' impacts mitigation and avoidance measures, energy saving, CO2 emissions reduction and resources reuse.

OUR TEAM

Our Company's activities are effectively and efficiently supported by a number of experienced scientific associates, specializing in all fields of environmental science, such as:

Environmental Engineers

Marine & Coastal Environmentalists

Biologists

Environmental Hydrologists

Water Resources Environmental Scientists

Natural Resources Management & Agricultural Engineers



D. ARGYROPOULOS & associates
environmental consultants

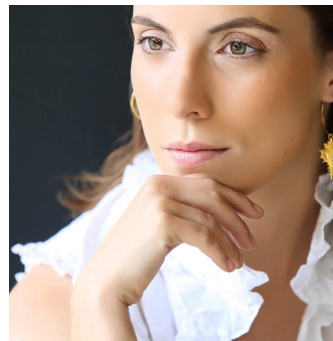
Board of Directors

DIMITRIOS ARGYROPOULOS

Founder of D. ARGYROPOULOS & Associates
Civil Engineer, MSc Environmental Health

MYRTO ARGYROPOULOU

Member of Board of D. ARGYROPOULOS & Associates.
Chemical Engineer, MSc DIC Environmental Engineering &
Business Management



OUR WORK

Our company is based on two sources of know-how:

- multidisciplinary support of partners
- international and national developments in the environmental protection sector

Our work includes a series of activities such as:

Elaboration of Environmental and Ecological studies

Elaboration of hydraulic studies

Environmental monitoring of projects and activities

Field work investigations

Measures implemented for environmental and public health protection

Preparation of environmental and ecological programs and public health programs

Elaboration of energy management studies

Implementation, operation and monitoring of Renewable Energy Resources projects

Development of educational programs on the environment and public health

Consulting services and Technical Support for local authorities, public establishments and businesses.

**LAND USE
& URBAN
PLANNING**

**ENVIRONMENTAL
& ECOLOGICAL
MANAGEMENT**

**ENVIRONMENTAL
IMPACT
ASSESSMENT**

Sectors

DESIGN STUDIES

Solid waste
Hydraulic
Wastewater
Industry

**STRATEGIC
ENVIRONMENTAL
ASSESSMENT**

**ENVIRONMENTAL
MONITORING**

**ENVIRONMENTAL
EDUCATION
& PUBLIC
AWARENESS**





1

ENVIRONMENTAL & ECOLOGICAL MANAGEMENT

Ecological Baseline Studies

Ecological base line studies for large projects of Tourism Development as well as for large Public Works. These studies are usually implied from the Environmental Permits of the projects before the beginning of works so that the potential impacts from the construction and operation should be better checked and mitigation measures should be modified if needed.



Our Recent Related Works:

- Acheloos River diversion works Ecological Base Line study at Western Greece (public work)
- Kilada Hills Tourism Development Ecological Baseline Study at Argolida Greece (large Hotel and Golf course)
- Ecological- Environmental baseline study for the Integrated Tourism Development Area at Messinia.

Appropriate Assessment Studies of Habitat Directive

EU Habitats Directive implies that any project that is likely to have significant effect on a Natura 2000 area shall be subject to appropriate assessment of its implications for the site



Our Recent Related Works:

- Limni Bay Resort Appropriate Assessment, at Polis Chrysochous Cyprus. The site of the project (Hotel, villas and two golf courses) is in a Natura 2000 area with *Caretta caretta* protected species.
- Athens-Thessaloniki PATHE motorway, section Deviation of Stylida (Greece).
- Windfarms in Crete of 960MW with submarine cable from Crete to Athens (Greece).

Coastal and Inland Water Quality Studies

Our Recent Related Works:

- Environmental management study for River Nesta in Bulgaria (PHARE program)
- Environmental management study for River Nestos in Greece (INTERREG I program)
- Water Quality management of Axios river (MEDSPA)
- Strategy for the management of quality on inland surface waters of Greece (Ministry of the Environment)



EU Directives Implementation Studies

Most EU directives, like the Water Directive, Habitats Directive and Waste Directive imply each member-state to conduct various implementation studies. We have conducted such studies both for Greece and Cyprus:

- Implementation of Articles 5, 6, 8 and 14 of WATER FRAMEWORK DIRECTIVE 2000/60 in Cyprus for the Ministry of Agriculture Rural Development and Environment (water management study)
- Revision of Water Basins Management Plan of Greece at Attica and East Sterea Regions.
- Survey and Evaluation of Conservation Status of Marine Species and Habitats of EU concern in Greece





2 ENVIRONMENTAL IMPACT ASSESSMENT (EIA)



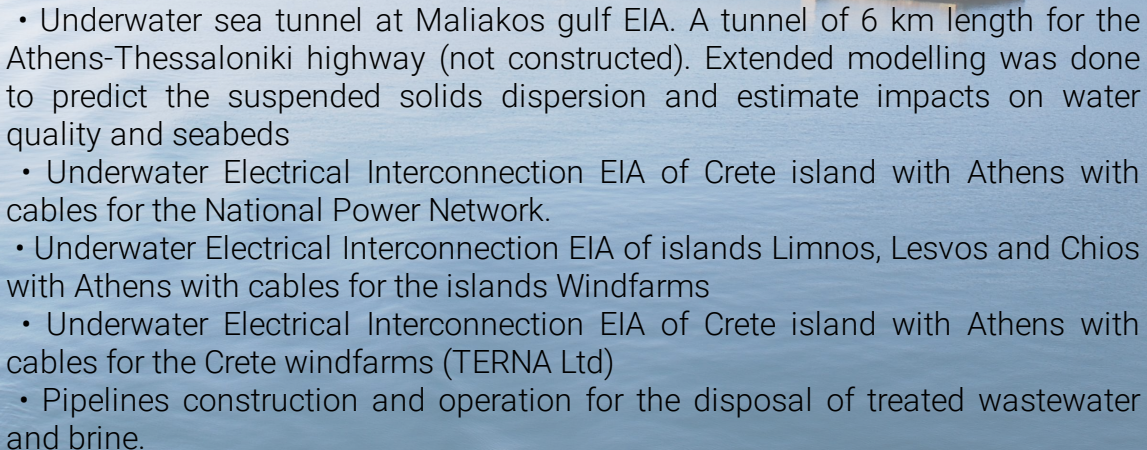
Ports , Marine & Coastal Works

We have carried out EIAs for major ports of Greece upgrade and extension works, including extended Dredging and Docks Construction. A likely oil spill in the case of Thessaloniki and Messinia was examined with the aid of water modelling tools. In all projects, port ships and vehicle traffic was simulated via specialized models to calculate air and noise pollution.

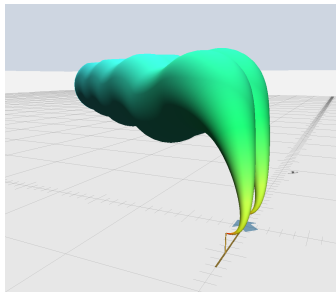
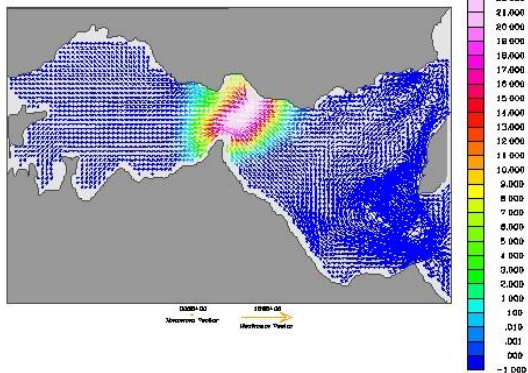
We have also carried out EIAs for major coastal works in Greek seas such as pipelines construction, tunnels construction, electric cables etc. In most cases we used water movement and water quality simulation modeling tools to predict the dispersion of suspended solids during construction or the dispersion of pollutants.

- Thessaloniki Port
- Messinia new Port
- Zakynthos Port
- Argostoli Kefalonia Port
- Lixouri Kefalonia Port
- Mytilini Port
- Igoumenitsa Port

Some examples of our recent Related Projects

- 
- A photograph of a coastal town, likely Igoumenitsa, with a harbor and a large pier structure in the water. The town is built on a hillside overlooking the sea, with numerous buildings and a prominent church spire. The pier consists of several concrete sections connected by walkways, extending into the blue water.
- Underwater sea tunnel at Maliakos gulf EIA. A tunnel of 6 km length for the Athens-Thessaloniki highway (not constructed). Extended modelling was done to predict the suspended solids dispersion and estimate impacts on water quality and seabeds
 - Underwater Electrical Interconnection EIA of Crete island with Athens with cables for the National Power Network.
 - Underwater Electrical Interconnection EIA of islands Limnos, Lesvos and Chios with Athens with cables for the islands Windfarms
 - Underwater Electrical Interconnection EIA of Crete island with Athens with cables for the Crete windfarms (TERNA Ltd)
 - Pipelines construction and operation for the disposal of treated wastewater and brine.

Maliakos gulf simulation model, Suspended Solids distribution during dredging for Tunnel



Roads

- Athens-Thessaloniki PATHE motorway, sections:
 - Korinthos-Patra (120km),
 - Elefsina- Korinthos (60km),
 - Agios Konstantinos- Kamena Vourla,
 - Skarfia- Thermopiles
 - Tempi-Rapsani
- EGNATIA motorway, section Igoumenitsa to Vrosina (40km), section Nea Makri to Alexandroupoli.
- North Highway of Crete (VOAK), sections Kalo Chorio- Frouzi and Kavousi- Afchenas Agathias.
- Maliakos Golf Underwater tunnel
- Ring road of Trikala- Pili
- Athens-Marathon Olympic Route (42km)
- Meteora Road Network
- National Highway 77 Chalkida- Psachna- Istiea- Edipsos



Railways

- Environmental Impact Assessment for the operation of the Electric Railway line of ISAP Athens network
- Preparation of supporting environmental studies of the project "Infrastructure Renovation – superstructure of the lines and strengthening of the tunnel to Omonia – Monastiraki" of Electric Railway line of ISAP Athens network
- Athens-Thessaloniki Railway line, section Tithorea- Domokos
- Athens-Thessaloniki Railway line, section Lianokladi - Domokos
- Patras- Amaliada Railway line
- Light Railway (tram) of Pireaus city (Athens)

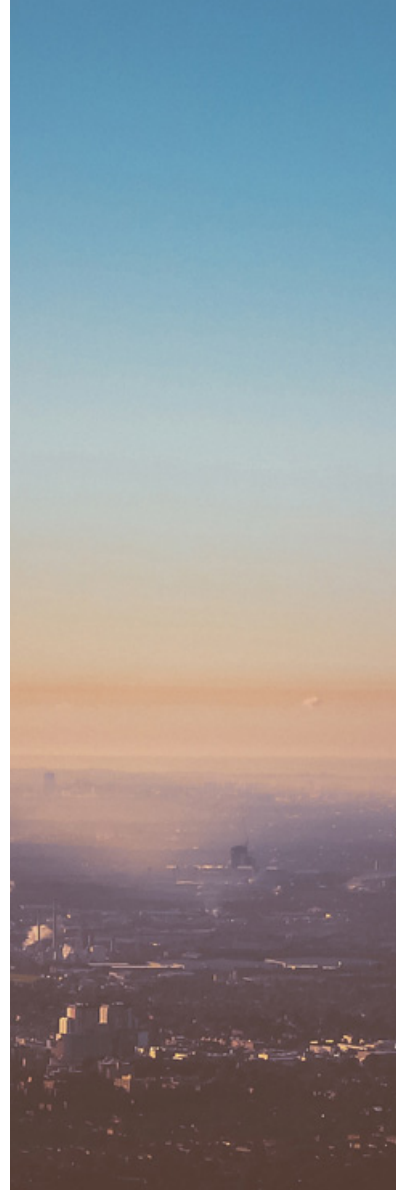


Energy Infrastructure

We have carried out EIA for major conventional or Renewable Energy projects like Large and Small Hydropower Dams, large Wind Farms, Hydrogen Power Production plants, Electric Network works. In all cases models were used to predict noise pollution, air pollution and visual impact.

Our Recent Related Work include:

- Large Hydropower Dam preliminary EIA at Avlaki on Acheloos river of 60 MW
- 4 Small Hydropower Dams on Aliakmonas river of about 10 MW each
- Mega Wind Farm on Limnos, Lesvos and Chios islands and underwater cable interconnection with terrestrial Central Greece (for Rokas-Iberdrola companies) of 706 MW, consisting of 23 wind farms with a total of 350 wind turbines
- Wind Farm on Crete island and underwater cable interconnection with terrestrial Central Greece (for Terna company) of 920 MW
- Electrical Interconnection Network of Crete to Attica with submarine cables for Public Power Corporation affiliate company (ADMIE). The underwater section has a length of about 470 km.



Airports

We have carried out EIA and acoustic studies for airports and hydroplanes ports. For the acoustic studies noise and air models were used

- Kefalonia airport EIA and acoustic study
- Porto Cheli Development airport acoustic study
- Porto Cheli hydroplane port EIA and acoustic study
- Ermionida hydroplane port EIA and acoustic study



Stadiums

- AEK Stadium, premier league football team of Greece, called AGIA SOFIA at Philadelphia, Athens, Greece
- Larissa, a premier league football team of Greece, football stadium at Larissa, Greece
- Closed Volleyball Stadium of Peania, Attiki. An Olympic Games Stadium.
- Multi-modal Sports Center at Peristeri Athens (boxing complex). An Olympic Games Stadium
- Sports Center in Agios Kosmas Athens
- Creta Stadium at Iraklion city. An Olympic Games Stadium
- New Sports Center with an ice-skating rink and swimming pool in Marousi



Industrial

- Chicken slaughterhouse and processing facility of HQF at Evia island, Greece
- Aluminium profile industry of ALCO at Athens, Greece
- ACROPOLIS TECHNOPOPOLIS High Technology and Research Park in Afidnes, Attica
- Industrial Area of Tanagra, Viotia, Greece
- Industrial area of Heraklion, in Crete
- Commercial Depot at Enofita of Viotia, Greece.
- Two Shipyards at Kinosoura and Salamina island.
- Evaluation of PPC (public power corporation) power station study in Kos
- EIA of aggregate quarries in Edessa
- EIA of 7 pharmaceutical cannabis facilities in Greece



Waste & Wastewater Treatment Plants

- Municipal Wastewater Treatment plants EIA for many cities in Greece (Larisa, Florina, Skopelos, Sami Kefalonia, Korinthos, Nestor, Markopoulo, Kyparissia etc)
- Medical Waste Treatment plant KEMA at the Industrial Area of Thessaloniki
- Medical Waste incinerators at hospitals (Provincial Hospital of Chania and Lamia, Universal Hospital of Larisa, Prefectural Hospital of Argos, Preveza and Kavala.
- Mobile medical waste sterilization systems (Thessaloniki, Volos, Trikala, Larissa, Veria, Edessa, Kozani, Florina, Drama, Evagelismos, Genimata etc)





Tourism

We have carried out a great number of major tourism developments in Greece, Cyprus and Oman consisting mostly of 5 stars hotels, luxury villas and in some cases of golf courses. Air, noise and water modelling are consistently used while ecological base line studies are carried out when the development is cited inside or near to a protected area.

- Costa Navarino tourism development at two sites in Messinia, Greece. It consists of luxury hotels, villas and two signature golf courses, Dunes Course and Bay Course in a plot of about 300 hectares. Costa Navarino operates since 2010. At his final stage will afford 8.000 beds
- Kilada Hills Tourism Development at Kranidi of Argolida (a luxury hotel and villas of 3.128 inhabitants and a signature 18 holes golf course)
- Edge Project tourism development in Oman at a 1,000 hectares project area. The project includes 2 hotels and two golf courses at Salalah, south Oman.
- Alatas island tourism development project in Pagasitikos Gulf with 1.000 beds
- San Stefano complex development project in Corfu, with 990 beds
- Limni Bay Resort project at Polis Chrysochous, Cyprus. In the two plots of 300 hectares total, two 18 holes signature golf courses, one hotel and villas will be constructed





3

STRATEGIC ENVIRONMENTAL ASSESSMENT

Energy

- National Development program for the Electricity of Greece, for the period 2017-2028 (ADMIE, a PPC affiliate company).
- “Agios Efstratios Green Island”, a plan for the development of Electricity and Thermal Power in an island produced locally only from Renewable Energy Resources (Institute for Renewable Energy of Greece)

Transportation

- “Ionia Odos” motorway and “Korinthos-Tripoli- Lefktrou- Klamata” motorway
- Strengthening the transportation sector in Greece Program for the period 2007-2013 (Ministry of Infrastructure)

Tourism

- Special Planning for Tourism Development of Kranidi area (MINDCOMPASS Ltd, 2017)
- Special Planning for Tourism Development of Mareza area in Corinth (MAREZA Ltd, 2016)

Land Use & Urban Planning

- National Spatial Plan for Industry in Greece (Ministry of the Environment)
- Spatial Housing Plan of Prespa municipality
- Spatial Development Plan of tertiary sector in Kantza Athens
- Protection Zoning Plan for Parnitha Mountain (Ministry of Environment)

Agricultural Planning

- National Development program for the Agriculture of Greece, for the period 2007-13 (for the Ministry of Agriculture).
- National Development program for “Fishing and the Sea” in Greece, for the period 2014-2020 (Ministry of Agriculture)

Strategic Environmental Assessment studies we conducted for major plans and programs in Greece



4

LAND USE & URBAN PLANNING

We have participated in Land Use and Urban Planning Design Studies for Greek territory and for Regions and cities of Greece supporting the Environmental Aspect of the plans.

- National Spatial Development Plan for Tourism of Greece (Ministry of the Environment, 2018)
- Land Use and Sustainable Development Plan of Thessaly Region (Ministry of Environment, 2012)
- Masterplan of Patras city (Ministry of the Environment, 2009)
- Land Use Plan of Serifos island (Municipality of Serifos)
- Land Use Plan of Bizani (Municipality of Bizani, Epirus)
- Land Use Plan of Prespa (Municipality of Prespa, Macedonia)
- . Great Archaeological Walk of Athens





5

DESIGN STUDIES infrasturries and industry

Solid Waste Design

- Landfill Restoration design study for los island Municipality
- Compost facility design study for los island Municipality
- Sanitary landfill design study for Alexandroupolis
- Sanitary landfill design study for Naxos island
- Preliminary study for the Waste Recovery & Composting Plant of Larissa
- Waste management plan of Doha city, Pakistan

Hydraulic Design

- Design study for the water supply system of Kallithea- Plati, Prespes
- Preliminary study for water supply pipeline from Stymphalia Lake
- Preliminary hydraulics design study of vertical axis of EGNATIA HIGHWAY, section Thessaloniki Airport - Profitis
- Hydraulics design Study for Prefectural road of Kanavari-Thespieae interchange- Domvrena-Thisvi- Prodomos (30km)

Wastewater Design

• Wastewater Treatment Plants design of Lentas Hotel

- Preliminary Study for water supply and sewage networks of surrounding settlements of Korinthos
- Preliminary Study for water supply and sewage networks of settlements in the Ancient Korinthos area.
- Study for the tertiary treatment and disposal of sludge from the sewage treatment plant of the Industrial Area of Heraklion (SMILES program)

Pharmaceutical Cannabis Industrial Facilities Design Cannatec S.A. P. cannabis facility at Kilkis

Acoustic Design

- Anti vibration study for electrical railway of Athens
- Noise barriers design study along the Thessaloniki Ring Road
- Noise barriers design study along the Thessaloniki Ring Road
- Noise mapping of Kalamaria Thessaloniki and of Serres cities



6

ENVIRONMENTAL MONITORING

Water

- Costa Navarino project, monitoring of water quality of Selas river, Messinia
- ECOFLOW Research Program, Acheloos river water quality monitoring, Central Greece
- Underwater sea tunnel at Maliakos gulf, monitoring sea currents velocity (Central Greece, for the Ministry of Environment).

Noise & Vibration

- Noise and vibration monitoring in Athens Electrical Railway (ISAP), Athens Subway (Metro), Athens Light Train
- Noise monitoring at Kalamaria Thessaloniki and Serres cities, in the context of the Noise Mapping project (Ministry of Environment).
- Noise and vibration monitoring for the needs of Anti-vibration study for Electrical Railway of Athens
- Noise monitoring (24h noise level measurements) for the needs of Noise barriers design study along the Thessaloniki Ring Road

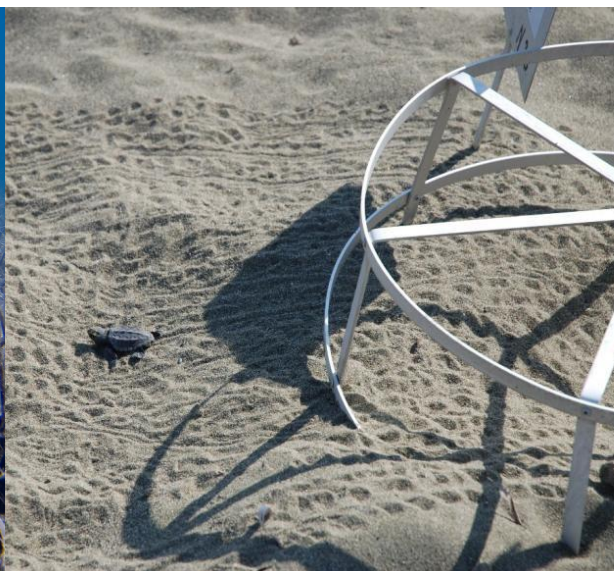
In all EIAs we are involved Environmental Monitoring is carried out by our experts in order to make reliable evaluation of existing environment before, during or after the project construction in order to verify the impacts foreseen by the EIAs.

Ecology

- Fish, mammals, invertebrates and habitat types monitoring in Pamvotida Lake area, Ioannina Greece, for the needs of Conservation Status assessment program of Pamvotida Protected Area.
- Phytobenthos, Zoobenthos monitoring of Maliakos gulf for the needs of Maliakos Underwater Tunnel EIA.
- Birds monitoring for the needs of Mega Wind Farm EIA on Limnos, Lesvos and Chios islands
- Birds monitoring for the needs of Wind Farm on Crete island EIA
- Birds monitoring for the needs of Electrical Interconnection Network of Crete to Attica EIA.
- Bats monitoring for the needs of the Panagopoula Railway Tunnel EIA
- Mammals and habitat types monitoring



Some examples of our ecology
environmental monitoring field work





7

ENVIRONMENTAL EDUCATION & PUBLIC AWARENESS

Environmental Education

We have been involved in Environmental Education programs in Greece and abroad.

- Development of environmental education material on "Rivers pollution and its abatement" in English and Greek. Deliverables were an environmental education Software, ('RIVMAN' and 'RIVTEST') and related explanatory material (assignment by DG XI C4 ENVIRONMENT AND EDUCATION)

- Environmental Education lectures on Wastewater treatment, Environmental Legislation on EIA and Water Pollution, given by D. Argyropoulos in the framework of many programs by Greek Colleges and Professional Unions like the Technical Chamber of Greece.

Public Awareness

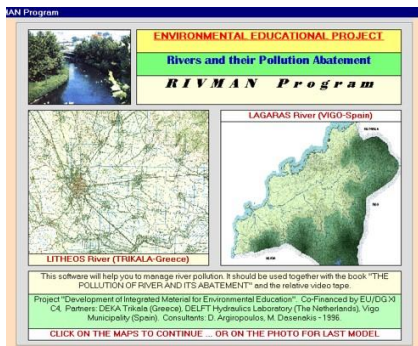
During the procedure of consultation with the public, a mandatory phase of an EIA approval (according to EU legislation), we have participated in most of the 500 EIA studies public consultation that we have conducted.

We have managed various other public awareness and participation programs as part of implementation of EU directives or other nonobligatory activities. Some recent examples are:

- Management of Public Participation according to Article 14 of the EC Water Framework Directive in Cyprus and Greece (after assignment by the ministry of Agriculture and Environment of Cyprus)

- Presentation of the Appropriate Assessment study of Limni Bay Resort in the Public Participation procedure by the ministry of Agriculture and Environment in Nicosia Cyprus

- Presentation of the Appropriate Assessment study of Limni Bay Resort in the Directorate-General for Environment of the European Commission in Brussels



OUR CLIENTS

We work closely with a wide range of clients from different sectors and regions across public sector and private sector.

These are just some of the people we're proud to work with:





Contact us!

Tinou 2, Holargos
15662 Athens GREECE

emails:
dargy@otenet.gr
m.argyropoulou@d-argyropoulos.gr

phone:
+302106540188
website:
www.d-argyropoulos.gr